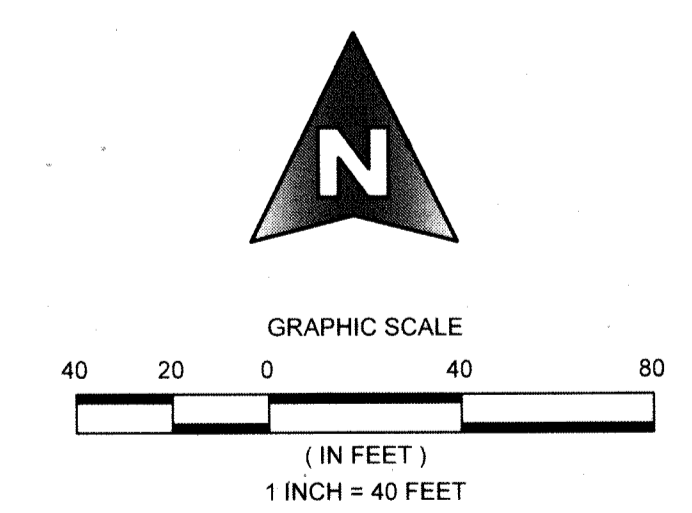
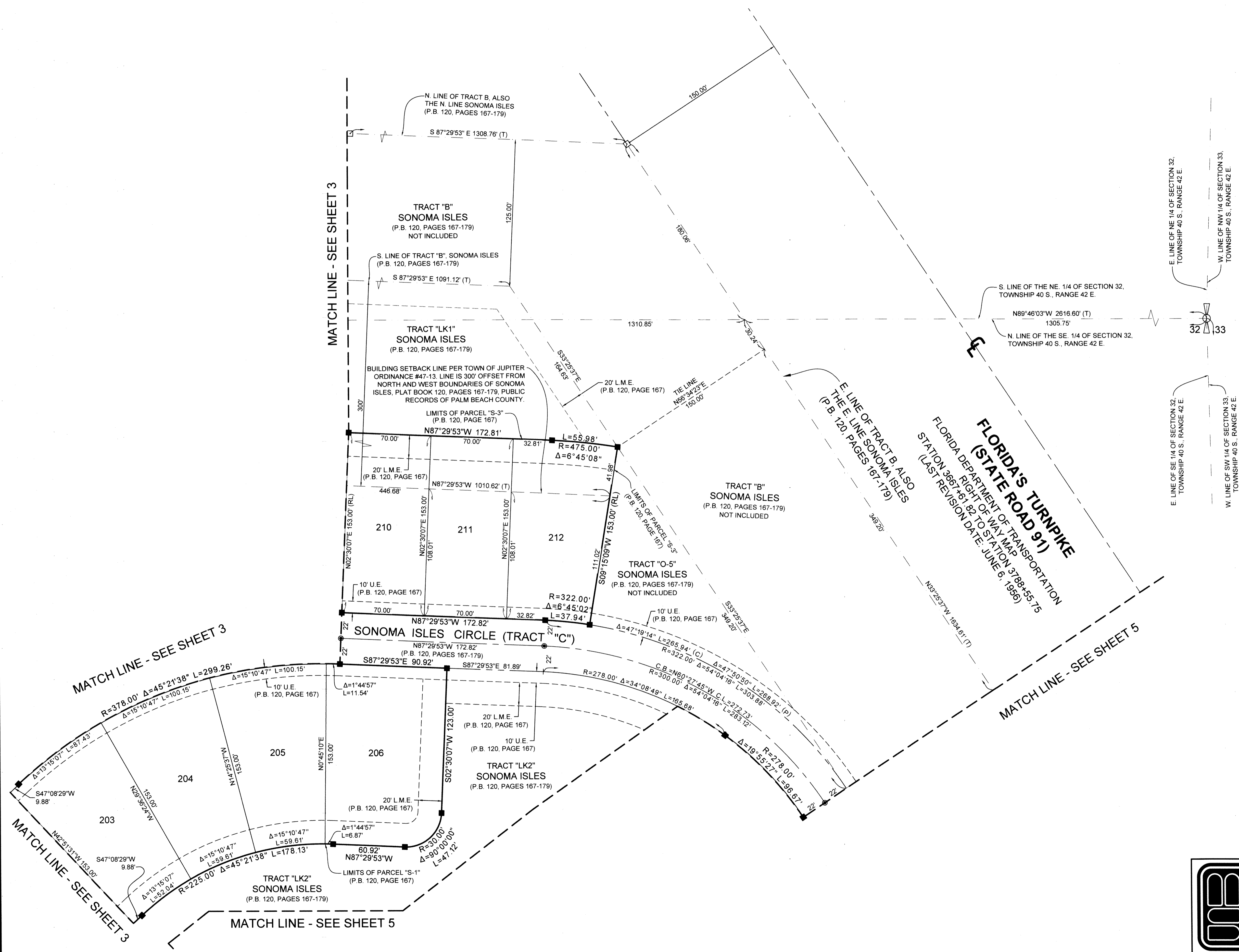
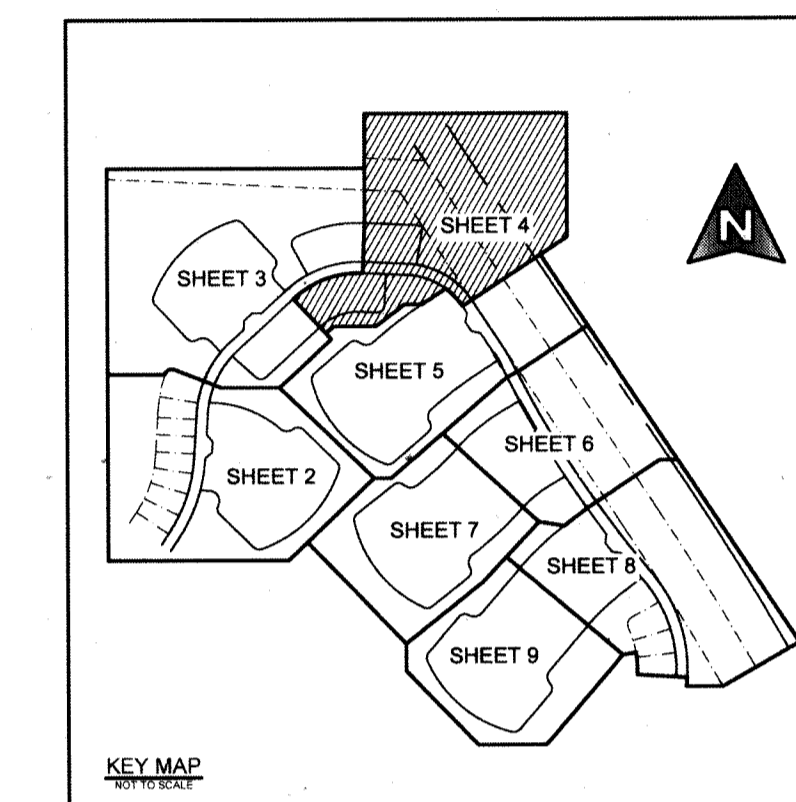


SONOMA ISLES PLAT 4

LYING IN SECTION 32, TOWNSHIP 40 SOUTH, RANGE 42 EAST AND SECTION 5, TOWNSHIP 41 SOUTH, RANGE 42 EAST, TOWN OF JUPITER, PALM BEACH COUNTY, FLORIDA, BEING A RE-PLAT OF PARCELS "R", "S-1", "S-2", "S-3", "T", "U" AND "V", PLAT OF SONOMA ISLES, AS RECORDED IN PLAT BOOK 120, PAGES 167 THROUGH 179, INCLUSIVE, PUBLIC RECORDS OF PALM BEACH COUNTY, FLORIDA
SHEET 4 OF 9 MARCH, 2017

28

COUNTY OF PALM BEACH)
STATE OF FLORIDA) SS
THIS PLAT WAS FILED FOR RECORD AT)
M. THIS) DAY OF)
2017, AND DULY)
RECORDED IN PLAT BOOK NO.)
ON PAGE) THRU)
SHARON R. BOCK,
CLERK AND COMPTROLLER
BY:) D.C.



SHEET 4 OF 9

MICHAEL B. SCHORAH & ASSOCIATES, INC.
1850 FOREST HILL BLVD., SUITE 206
WEST PALM BEACH, FLORIDA 33406
EB# 2438 TEL. (561) 968-0080 FAX. (561) 642-9726 LB# 2438

SONOMA ISLES PLAT 4

P:\CADD\Projects\167A SONOMA ISLES\167 SONOMA PLAT 4.dwg 6/27/2017 3:17:29 PM, LBR